

Personal Fall Protection Equipment

Personal Fall Protection Equipment should only be chosen when there are no other alternatives to prevent risk of falling. This is because the use in itself involves risks of falling and getting stuck hanging, with a risk of injury. It is therefore important that careful work preparations are done before work commence and that the work is never carried out alone .

Organisation and planning

When possible, solutions other than personal fall protection equipment should be used, for example, scaffolding, guard rails or collective protection such as safety nets. If this is not possible, personal fall protection is used.

Work with fall protection equipment must never be carried out alone .

As an employer, you must provide your staff with proper protective equipment and information on how to use it.

Work with personal fall protection equipment must be prepared and approved by Skanska's site management.

The work instruction shall include:

- Choosing the appropriate personal fall protection equipment in relation to the conditions.
- Choice of anchor point and description of where and how anchorage should be made.
- That personnel who will use the equipment have the right competence for the task.
- A Rescue plan that describes how to rescue in case of a fall.
- How to cordon off the work area to prevent unauthorized persons from entering.

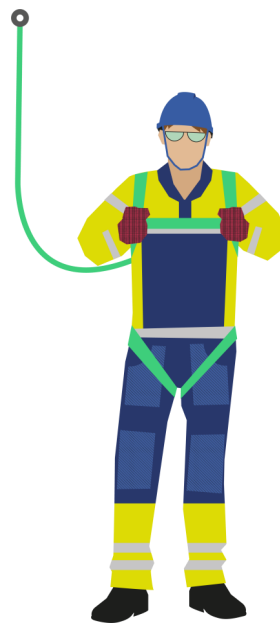
Equipment

- The fall protection system consists of: full harness, coupling line with attenuator and anchor point. All parts must be adapted to each other and CE labelled. Fall protection equipment must never be modified.
- Fall protection harness and fall protection vest are approved choices of fall protection equipment. Neither support belt nor seat harness are allowed on Skanska's worksites.
- The equipment must be checked annually by a competent person. The check must be documented.
- All fall protection harnesses have a unique identification number. Fall protection equipment and users shall be documented at the workplace.

Safe execution

- As an employee, use the equipment and follow the instructions given by your employer. Check that the equipment has undergone annual inspection before use.
- Make sure the equipment is checked and approved before using it. Defective equipment should be discarded immediately.
- Fall protection equipment must be used, maintained, cared for, checked and stored in accordance with the manufacturer's instructions.
- It may be necessary to anchor the tools in conjunction with work at height so that the risk of falling objects is prevented.

Contact Skanska's site management for more information and advice.



Place the anchor point as high as possible to reduce the fall height.

Qualifications

Basic training in fall protection is compulsory in order to carry out work while using personal fall protection equipment at Skanska's workplaces.